

IRONWOOD SUBDIVISION

A PLANNED UNIT DEVELOPMENT

PHASE 8

IN SOUTH OGDEN CITY

SCALE 1" = 30'

TAXING UNIT: 27

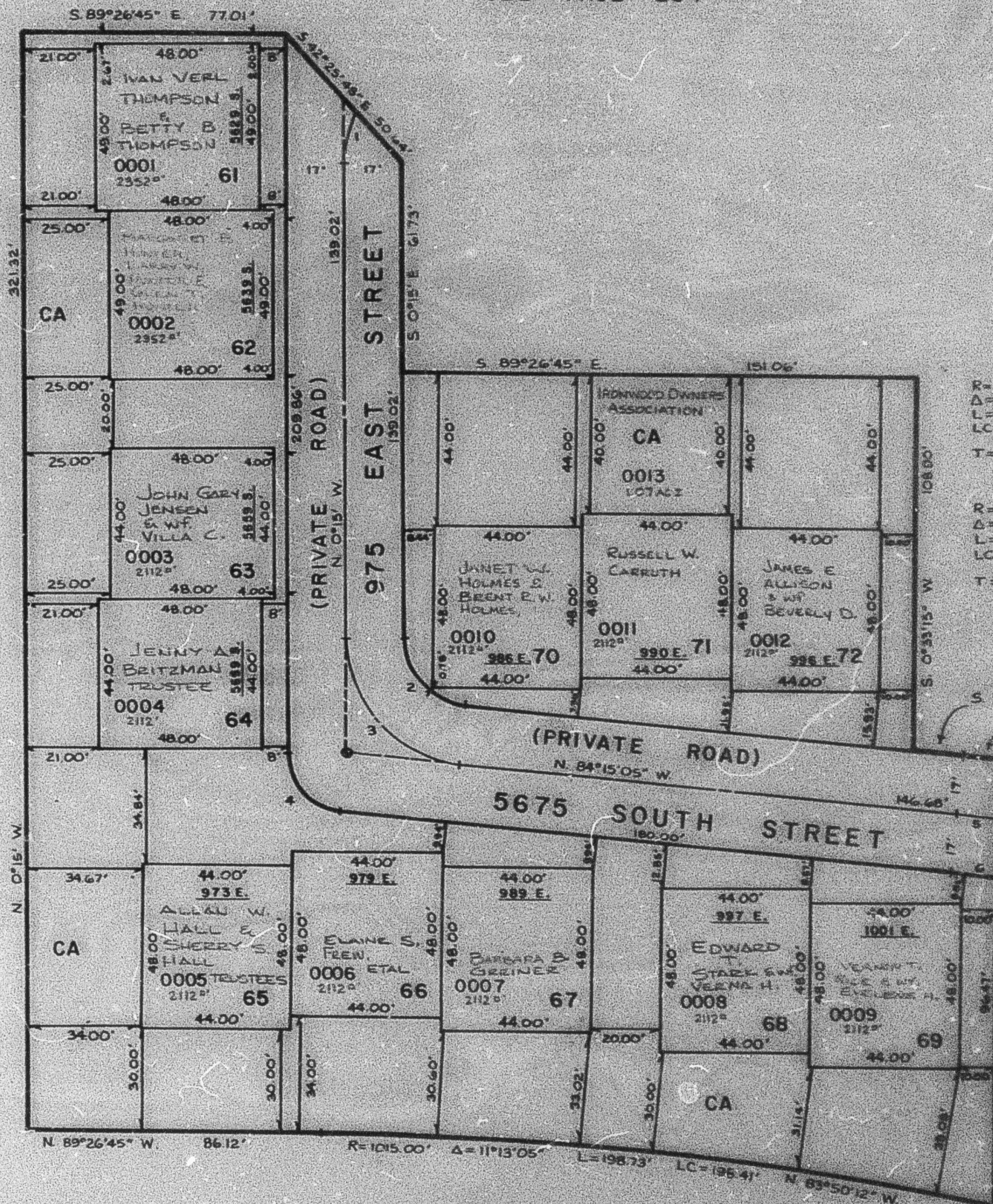
PREFIX: 07-290

EXCEPT WHERE OTHERWISE SHOWN ALL LOTS OWNED BY IRONWOOD INCORPORATED

SEE PAGE 284

SEE PAGE 80-1

SEE PAGE 80-1



CURVE DATA

| 1 | 2 | 3 |
|-------------------|----------------|----------------|
| R= 37.00' | 20.00' | 37.00' |
| Δ= 90°48'15" | 84°00'05" | 84°00'05" |
| L= 58.64' | 29.32' | 54.35' |
| LC= 52.69' | 26.77' | 48.52' |
| T= 37.52' | N. 42°15'02" W | 33.32' |
| 4 | 5 | 6 |
| R= 17.00' | 560.21' | 545.21' |
| Δ= 84°00'05" | 1°15'16" | 1°15'22" |
| L= 24.92' | 11.94' | 12.48' |
| LC= 22.75' | 11.94' | 13.48' |
| T= N. 42°15'02" W | S. 85°38'27" E | S. 85°32'24" E |

R= 577.21'
 Δ= 1°01'53"
 L= 10.30'
 LC= 10.39'
 S. 83°44'08" E.

NOTE:
 FOR COMPLETE ENG. DATA SEE ORIG.
 DED. PLAT IN BOOK 26, PAGE 48.

SEE PAGE 80-1